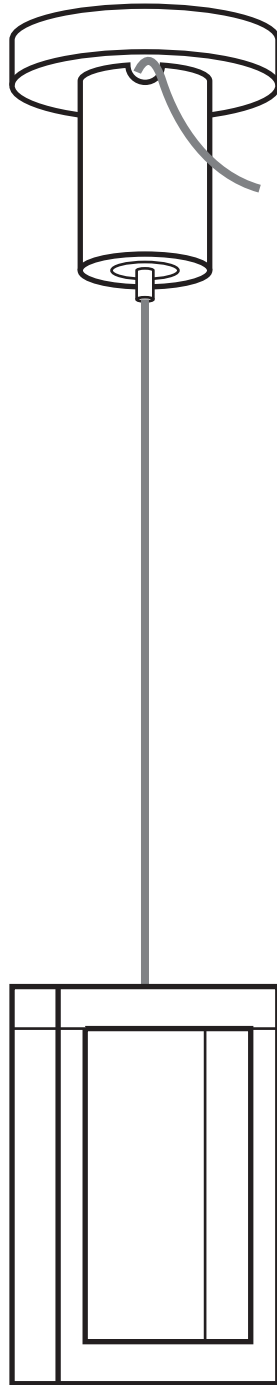


## INSTALLATION INSTRUCTION

# Wire Suspension



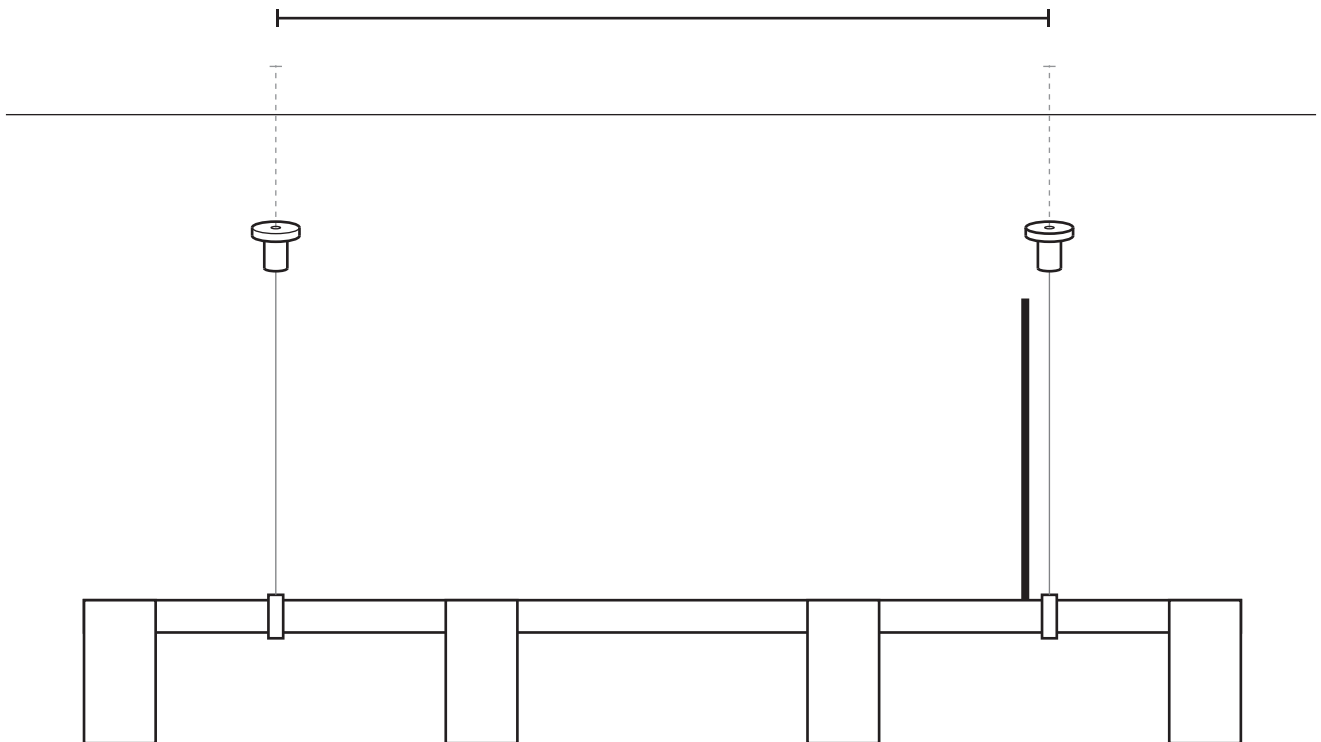
Rubn®

# INSTALLATION INSTRUCTION

1



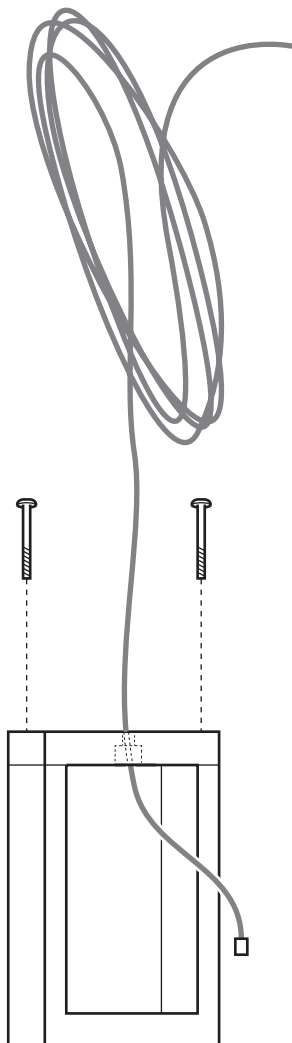
Measure, mark and align the desired distance between the wires, before drilling into the ceiling.



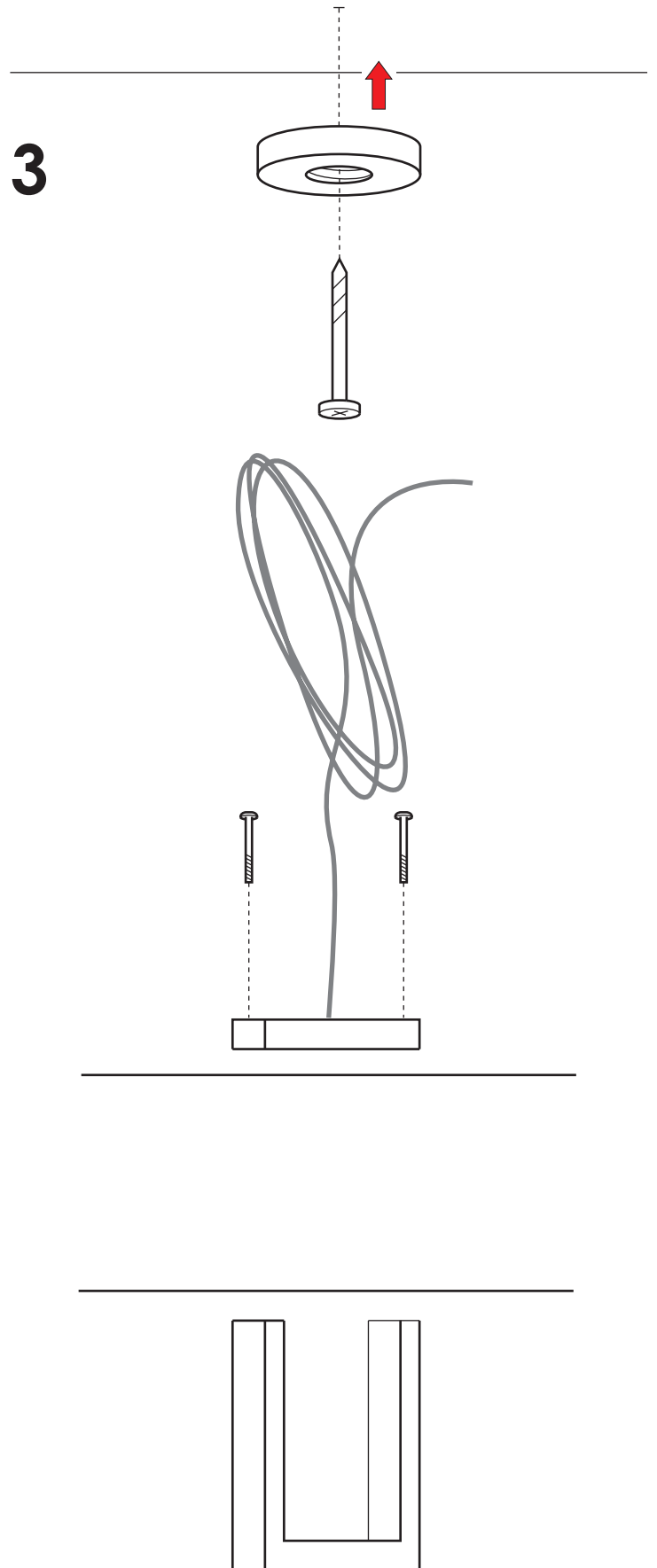
Rubn®

## INSTALLATION INSTRUCTION

2

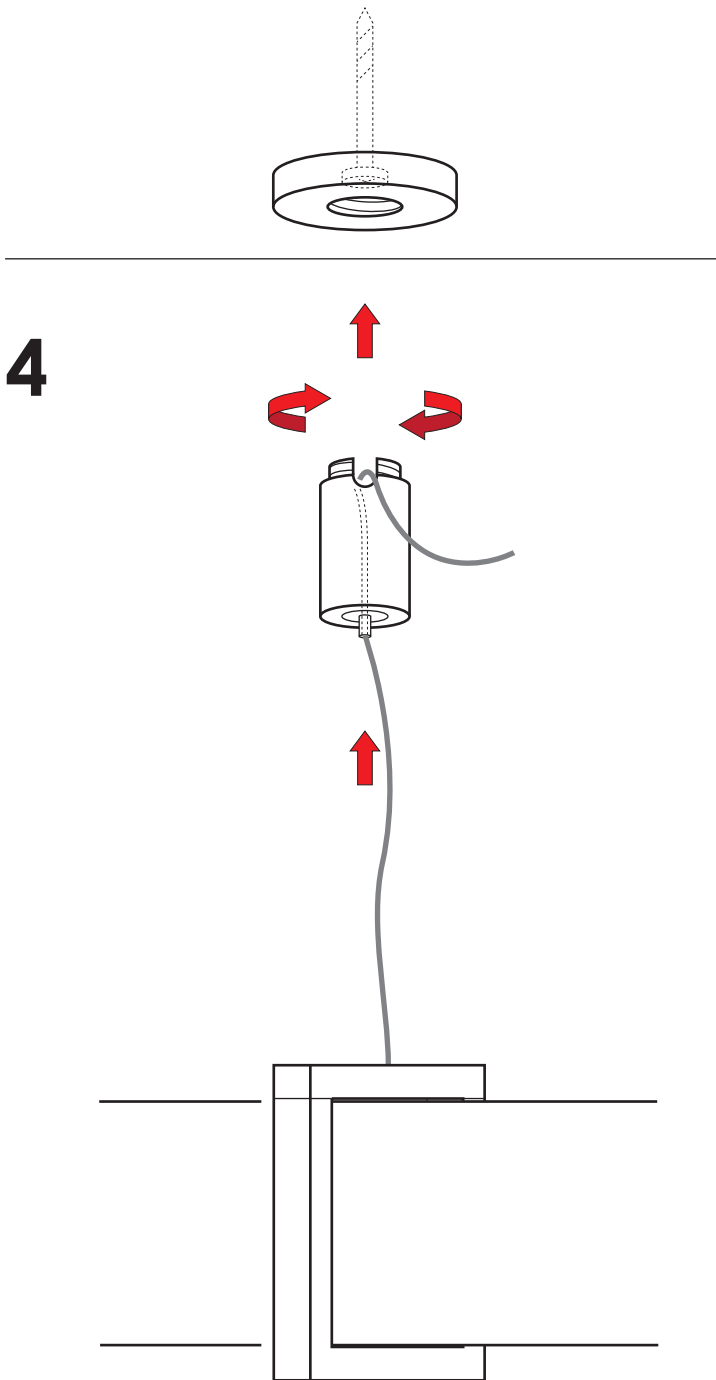


3

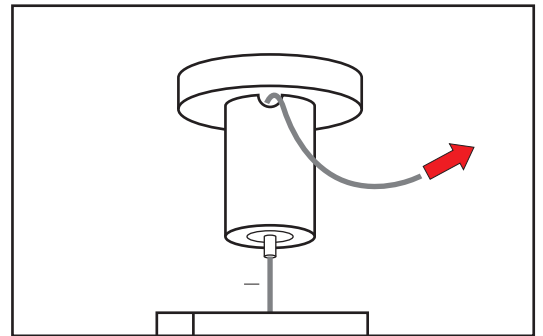


Rubn®

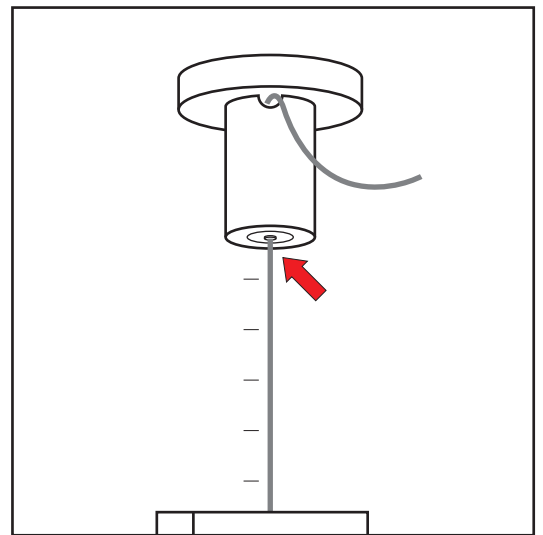
## INSTALLATION INSTRUCTION



Thread wire through lock.  
Connect lock to ceiling.



Raise lamp by pulling the wire.



Lower lamp by pushing in small  
bottom cylinder.

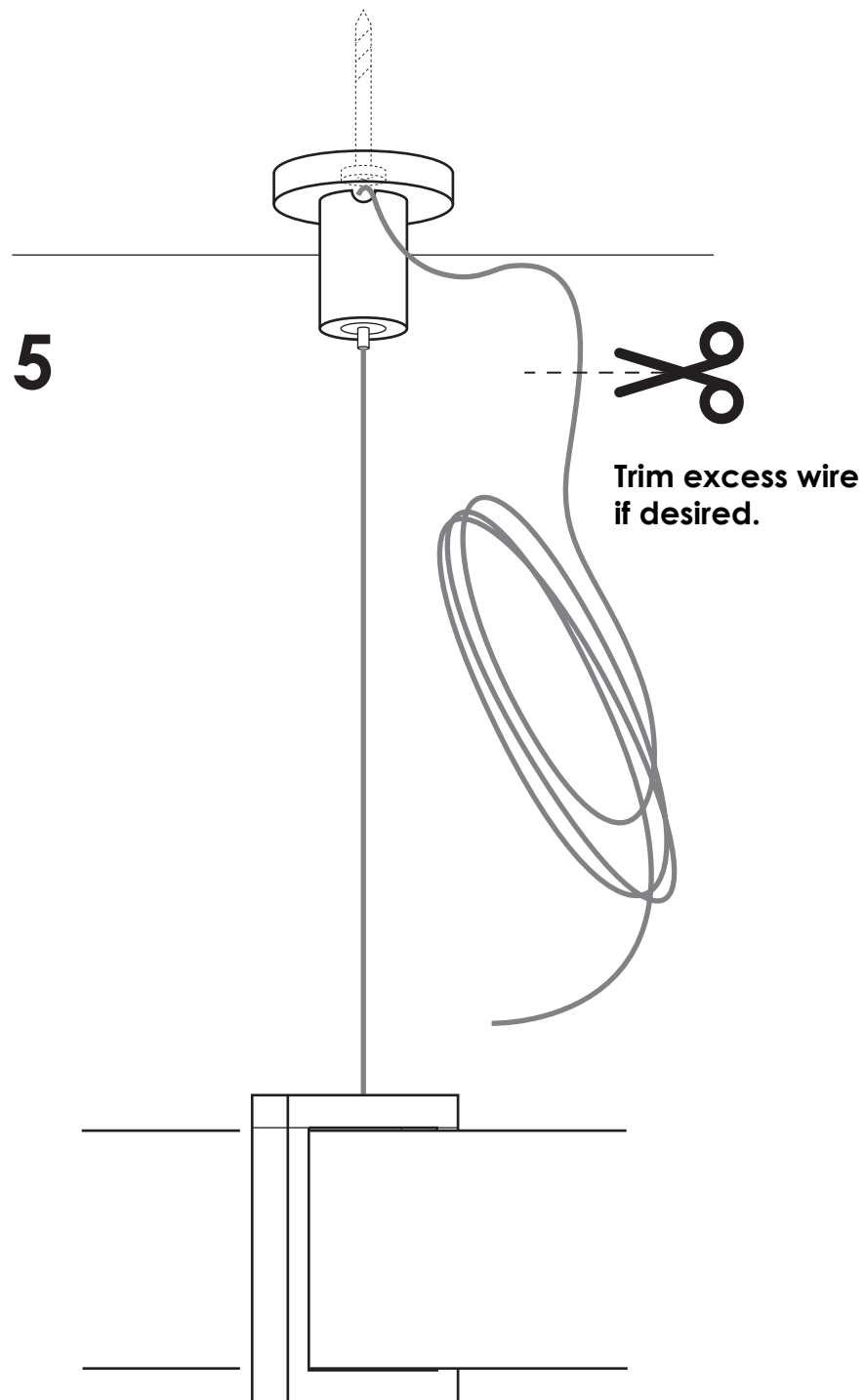


Be careful not to lower it  
past end of wire.



Keep a steady grip on  
the lamp when adjusting  
so it does not drop.

## INSTALLATION INSTRUCTION



Rubn®